

BUCKINGHAMSHIRE COUNCIL
Education Department

Highworth Combined School & Nursery

HIGHWORTH CLOSE HIGH WYCOMBE BUCKS. HP13 7PH

Tel. (01494) 525534

Email office@highworthcombined.co.uk



Newsletter: 7th June 2024

Issue: 30

Letters sent home & e-School messages this week: Y6 Volleyball Event, School Crossing Patroller Advert, Y5 Trip to Neasden Temple, Mrs Kern Return to Class 5K (5K)

Dear all

What an exciting week!

On Tuesday we were privileged to have a visit from 2 young musicians, Alice Martin (daughter of Mrs Martin) and Harry Turnbull. Alice is a singer, heading to the Royal Welsh College of Music and Drama in September to pursue her dream of becoming a professional musician. Harry accompanied Alice on piano. We were treated to some Puccini as children entered assembly, a tutorial on Hakuna Matata during assembly and a rendition of Let it Go as we left. As Mrs Martin pointed out, it is sometimes forgotten that the voice is an incredible instrument and we hope to have inspired a few children to think about taking singing lessons.

I think you all know what we did on Wednesday! It was a mammoth undertaking only possible with the support of all of our community. Thank you for making sure your children had everything that they needed; thank you to those who reminded others not to park in front of school (!) so we could safely get on to coaches; thank you for getting your children to school so early; thank you to Mrs Hastie who came in to school to teach an extra day and a huge thank you to all the staff and governors who came along on the trip to make sure the children had a wonderful day. Our only regret was not being able to take children from Nursery- their turn will come!

We also had the kind support of some sponsors: EAC, who provide us with technical support; Chartwells, our catering company; Supply Desk, a local teaching agency; Yorkshire Cleaning, who provide our cleaning service; Ford and Partners, local estate agents and a charitable donation given following our Iftar. Thank you so much to all of these organisations for your generosity.

You will find a small selection of photographs on our website here:

https://www.highworth.bucks.sch.uk/web/whole_school_trip_to_the_seaside/689742

Thoughts now turn to the other exciting events ahead during this busiest of half terms, not least Sports Day for Years 1 to 6, due to take place next Friday, weather permitting. Please see the last page of this Newsletter which explains how Sports Day will run. A decision about whether we are able to go ahead (taking account of the weather forecast) will be made on Thursday 13th June.

My best wishes for a happy weekend

Clare Pankhania

ATTENDANCE

To report your child's absence please phone and leave a message or send an email to:

reception@highworthcombined.co.uk

SCHOOL ATTENDANCE TARGET IS 96%

BEST ATTENDANCE: 99.3%
(CLASS 4C)

WELL DONE

WHOLE SCHOOL ATTENDANCE:
93.6%

DATES FOR YOUR DIARIES THIS WEEK:

Tuesday 11th June

Class Photographs

Wednesday 12th June

Bags2School Collection. Please leave filled bags under the tree by **9AM**

Thursday 13th June

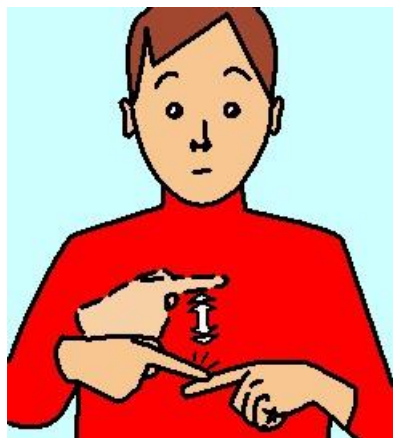
9am: e-Safety Parent workshop in the hall

Friday 14th June

10:15am front gate opens for spectators
Sports Day (Y1-Y6)

PARENT ZONE

SIGN OF THE WEEK



Quick

PTA NEWS

Please place donations in a secure bag that has been tied. Please use multiple bags rather than overfilling, to avoid breakage.

Bags2School will be collecting from our school on **Wednesday 12th June**. Please ensure donations are left at the front of school **under the tree by 9am**.

PLEASE NOTE we cannot accept bag donations before the collection day.

BAGS2SCHOOL

WHAT WE COLLECT

We accept the following **'good quality'** items for RE-USE*:

- Men's, Ladies' and Children's clothing
- Paired shoes (tied together or elastic band around)
- Handbags
- Hats
- Bags
- Scarves and ties
- Jewellery
- Lingerie
- Socks
- Belts
- Soft toys
- Household linen
- Household curtains
- Household towels
- Household bedding (bed sheets, pillow cases and duvet covers)

We ***DO NOT*** accept:

- *Duvets and blankets*
- *Pillows and cushions*
- *Carpets, rugs and mats (including bath, shower and toilet mats)*
- *Soiled, painted, ripped or wet clothing*
- *School uniforms with and without logo*
- *Corporate clothing and workwear*
- *Textile off cuts, yarns or threaded material*

Highworth Sports Day, 14th June 2024

As you know, Sports Day will take place on Friday 14th June (weather permitting). We are now in a position to tell you more about what to expect so that you can make appropriate plans. The following is a guide to events:

- Please send children to school in their PE kits with only a hat, water bottle and packed lunch if needed (see below for more information on lunches). Do not send book bags or other bags
- Children may wear a T-shirt to match the colour of their house if they wish to
- 10.15: field opens for spectators. Please bring picnic chairs and rugs as seating will not be provided
- 10.30: Sports Day starts with all pupils from Year 1 to Year 6 participating in team games
- The team games will be arranged in a linear layout with children organised in House colour groups so choose a spot to sit near to the relevant area
- Although teams will move positions during the games, you should be able to get a good view of your child/children without needing to move
- **Approx. 11.30:** There will be a short break whilst we clear away equipment and clear the running track for the competitive races
- Competitive races start for those children who qualified during the heats completed during PE lessons. A parents and carers race will be included!
- Picnic lunch; it is important that you collect your child from their class teacher, ensuring that the teacher knows that your child is now under your supervision
- Reception children will join us for the picnic. If you would like your younger children to join you, please collect them from their teacher too
- There will be no hot meals service on this day. A packed lunch will be provided for all those who ordered a meal for this day.
- School packed lunches and lunch boxes brought to school in the morning, will be delivered to relevant children before this time
- **Approx 12.00 until 13.00:** picnic lunch
- 13.00: end of Sports Day. You may take your child home with you or choose for them to stay at school. Should you wish for them to remain at school, please take your child back to their class teacher and make this known
- If you have younger children, you may collect them from Nursery or Reception on your way out
- Children remaining at school will be escorted back into the building for further activities and should be collected at 15.20 **from the main entrance to the school**

Finally, in the event of bad weather, please look out for eSchools messages as we will use this to communicate all decisions regarding postponement.