

BUCKINGHAMSHIRE COUNCIL
Education Department

Highworth Combined School & Nursery

HIGHWORTH CLOSE HIGH WYCOMBE BUCKS. HP13 7PH

Tel. (01494) 525534

Email office@highworthcombined.co.uk



Newsletter: 27th January 2023 Issue: 18

Letters sent home & e-School messages this week: Final Arrangements Young Voices, Mufti Day, Young Voices Tickets, Energize Tickets, Helpers for Valentine's Disco, Bikeability (Y5 & Y6), Recorder Club Cancelled, Hockey Club Cancelled, Teacher Strike Action – 1st February

Dear all

Thank you for your lovely welcome back to Highworth. It has been a joy to be back at school, spending time once more with children, staff, parents and carers. You don't need me to tell you what an amazing job Caroline Day and Clare Dimishky did running the school for the last 8 weeks. I cannot thank them enough for all that they did to ensure that everything went smoothly.

This morning, Year 3 performed an outstanding class assembly for the first time since they joined the school. It was fabulous, with the children showing what confident performers they have become. Very many thanks to all involved, especially Mrs Naidoo and Miss Ng.

Please ensure that you have read e-Schools messages sent yesterday about closure next Wednesday due to industrial action. Our apologies once again for the difficulties this will cause and thank you to those who have been kind enough to express their support.

My very best wishes for a happy weekend.

Clare Pankhania

ATTENDANCE

The display board at the front of the school shows each year group's weekly attendance.

SCHOOL ATTENDANCE TARGET IS 96%

BEST ATTENDANCE: 98%

(CLASS 5S)

WELL DONE

WHOLE SCHOOL ATTENDANCE:

92.1%

DATES FOR YOUR DIARIES NEXT WEEK:

Monday 30th January

Y5 NSPCC Workshops

Wednesday 1st February

Teacher Strike Action - **SCHOOL CLOSED**

Thursday 2nd February

Y6 NSPCC Workshops

PARENT ZONE

Supporting Together – Environment, Parents, Schools

STEPS

The Mental Health Support Team (MHST) would like to offer parents an opportunity to join them on a short workshop presentation in

Overcoming Childhood Anxiety

The workshop will help you as parents understand when anxiety might be a problem (as opposed to a 'normal' developmental phase) and describes different anxiety issues. It is also an opportunity to learn brief key treatment strategies and understand the important role you play as parents in supporting your children and young people that may be struggling with anxiety.

There are various sessions planned to take place on:

Monday 20/2/23 – 18:00-19:30 – Virtual via Teams

Wednesday 1/3/23 – 13:00-14:30 – Virtual via Teams

Friday 10/3/23 – 09:30-11:00 – Virtual via Teams

If you are interested in attending either of these event's, please click on the link below or scan the QR code to complete a short form of interest. Further details and links will then be sent out closer the time.

<https://forms.office.com/e/uTyjnsmkxr>



Come in!
For tasty food
and good company



Free meals
Wednesdays
6.00pm

Everyone is welcome

FoodCycle High
Wycombe

Oakridge Baptist Church
43 Oakridge Rd
HP11 2PH

Opens 11th January



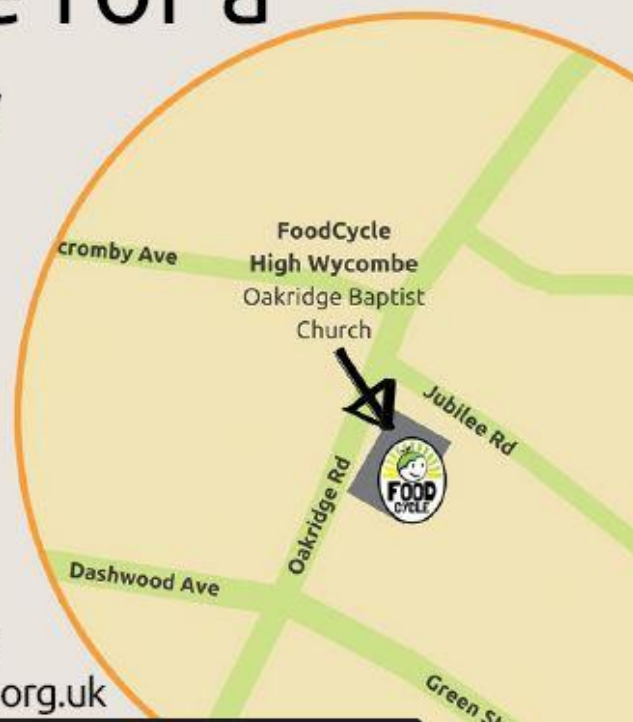


Sit and eat with us

Come inside for a warm, tasty meal.

No referral needed, just turn up!

Website: www.foodcycle.org.uk
Email: highwycombe@foodcycle.org.uk



Bowerdean February Health Event



WHY NOT?

Come along to a special 3 day health event in Bowerdean at The Hive:

- **2 and 3 February open from 10am – 4pm**
- **4 February open from 1pm – 5pm**

Autumn booster vaccinations on your doorstep for anyone:

- age 50+
- pregnant
- age 5+ with a health condition that puts you at risk
- caring for or living with someone at risk

With COVID and flu on the rise it's not the time to take chances with your health.

Walk-in clinics running at The Hive 2,3,4 February
Visit bit.ly/healthybowerdean



#healthybowerdean

FREE [Golden Ticket](#) offer at Chiltern Music Academy

Choirs, Orchestras, Wind Bands, Jazz Bands, Percussion Band, Recorder groups

Reception – Year 13, beginners to Grade 8 plus standard

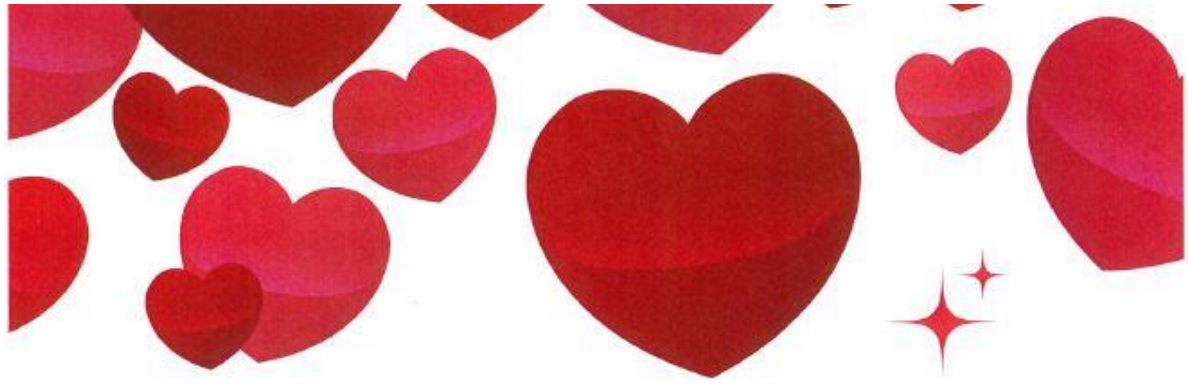
Start the term with a musical treat! Chiltern Music Academy is offering all Highworth Combined School pupils the opportunity to sample a **FREE** session, a chocolate bar, and the chance to win half a term of free CMA membership!

[Chiltern Music Academy](#) meets outside school hours to offer every child a solid foundation of musical knowledge and skill, enabling them to progress with confidence up the ladder of highly acclaimed CMA music ensembles. Our main schedules are at the Royal Grammar School on Fridays after school, Wycombe High School on Saturday mornings, and Jazz on Tuesday evenings at RGS.

Each group is led by a specialist musician with fun, wellbeing, and excellence as their priority at every stage. Why not enjoy watching some of our [videos](#) to see the excellent calibre of our specialist teachers and high quality of our events and ensembles!

You are warmly invited to take a look at the [CMA timetable and groups](#) to plan your visit, or [email](#) the CMA office for advice or to arrange a visit later in the term. Then come along, join a class or ensemble that suits your age and ability, and claim your [Golden Ticket](#) chocolate bar. It couldn't be easier!

"Joining the CMA has been one of the best things we have ever done- incredibly energising and uplifting!" (A parent last term)



Valentines **DISCO**



THURSDAY, 9TH FEBRUARY, 6-8PM

EVERYONE'S INVITED!

£2.00 ENTRY FEE

ALL CHILDREN MUST BE ACCOMPANIED BY AN ADULT

